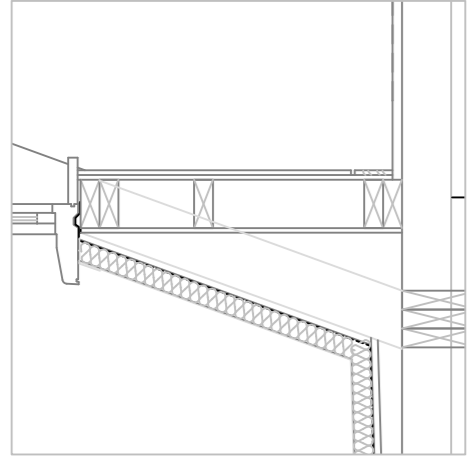


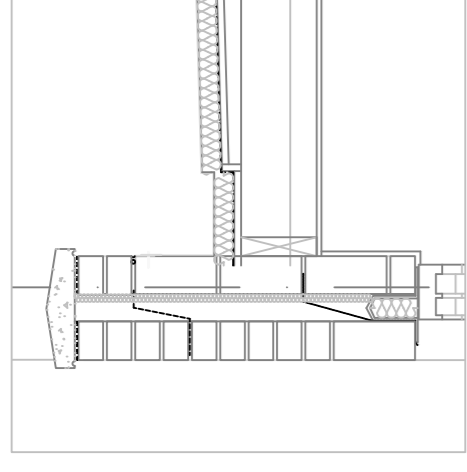
DATE	SCALE
BY	
CHECKED	
DATE	

STAIR SCHEDULE

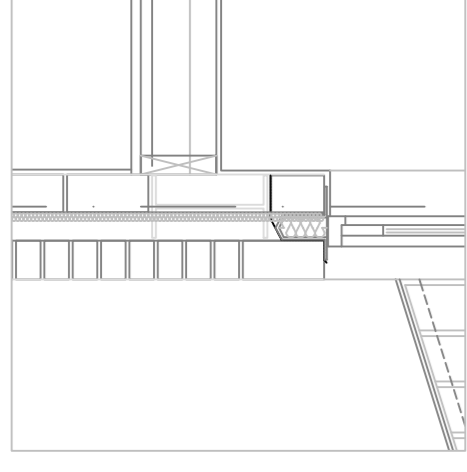
STAIRS	FFL - FFL	No. RISERS	RISER HEIGHT	TREAD WIDTH	CLEAR WIDTH	CONSTRUCTION	NOTES
EXTERNAL	560	4	145mm	280 mm	900 mm	INSITU CONCRETE	300mm HANDRAIL OVERRUN MIN. 900mm LANDING EACH SIDE
GROUND - FIRST (COMMON STAIR)	2720	16	170mm	250 mm	900 mm	PRECAST CONCRETE	CONTINUOUS HANDRAIL EACH SIDE
FIRST - SECOND (PRIVATE STAIR)	2750	15	183.3mm	250 mm	940 mm	TIMBER	SINGLE SIDE HANDRAIL
FIRST - SECOND (PRIVATE STAIR)	2750	14	196.4mm	250 mm	940 mm	TIMBER	SINGLE SIDE HANDRAIL



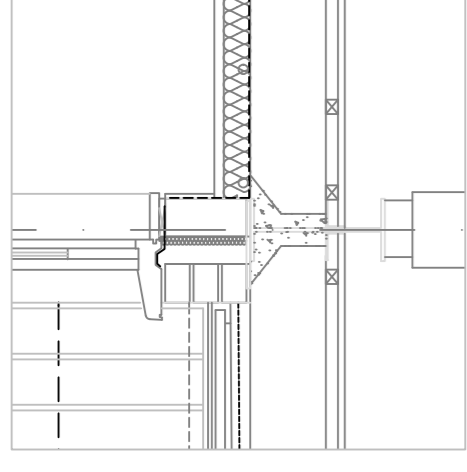
7.0 1:20
Lead grey Samrat fully adhered G410 - EL roof membrane fully adhered to rigid insulation boards with bitumen based vapour control layer on 18mm WPB plywood deck screwed to roof joists. 100x50mm timber studs bearing on 20x50mm roggings fixed plasterboard lining with shadow gap skirting detail



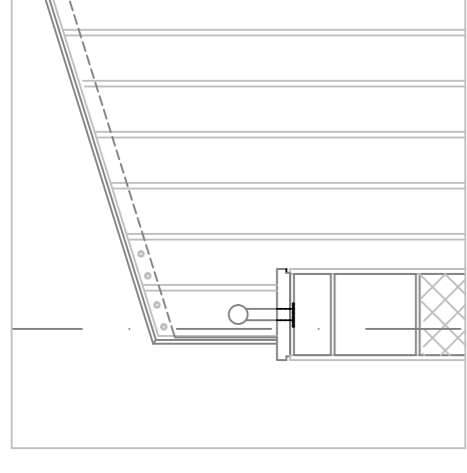
5.0 1:20
200x50mm C16 joists at 400c/s. to Engls. spec UB to Structural Engls. details. with structural Steel Lintol by IG Lintols with stepped cavity tray with stopped ends by Cavity Trays Ltd. Painted sw double glazed side light to patio doors. Samrat fully adhered G410 - EL roof membrane bonded to rigid insulation boards with bitumen based vapour control layer on 18mm WPB plywood deck to falls.



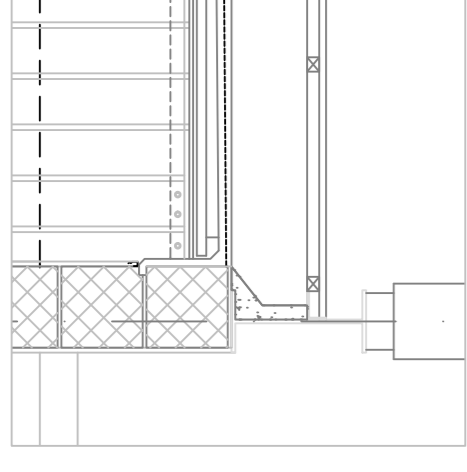
4.0 1:20
200x50mm C16 joists at 400c/s. to Engls. spec UB to Structural Engls. details. with structural Steel Lintol by IG Lintols with stepped cavity tray with stopped ends by Cavity Trays Ltd. Painted sw double glazed side light to patio doors.



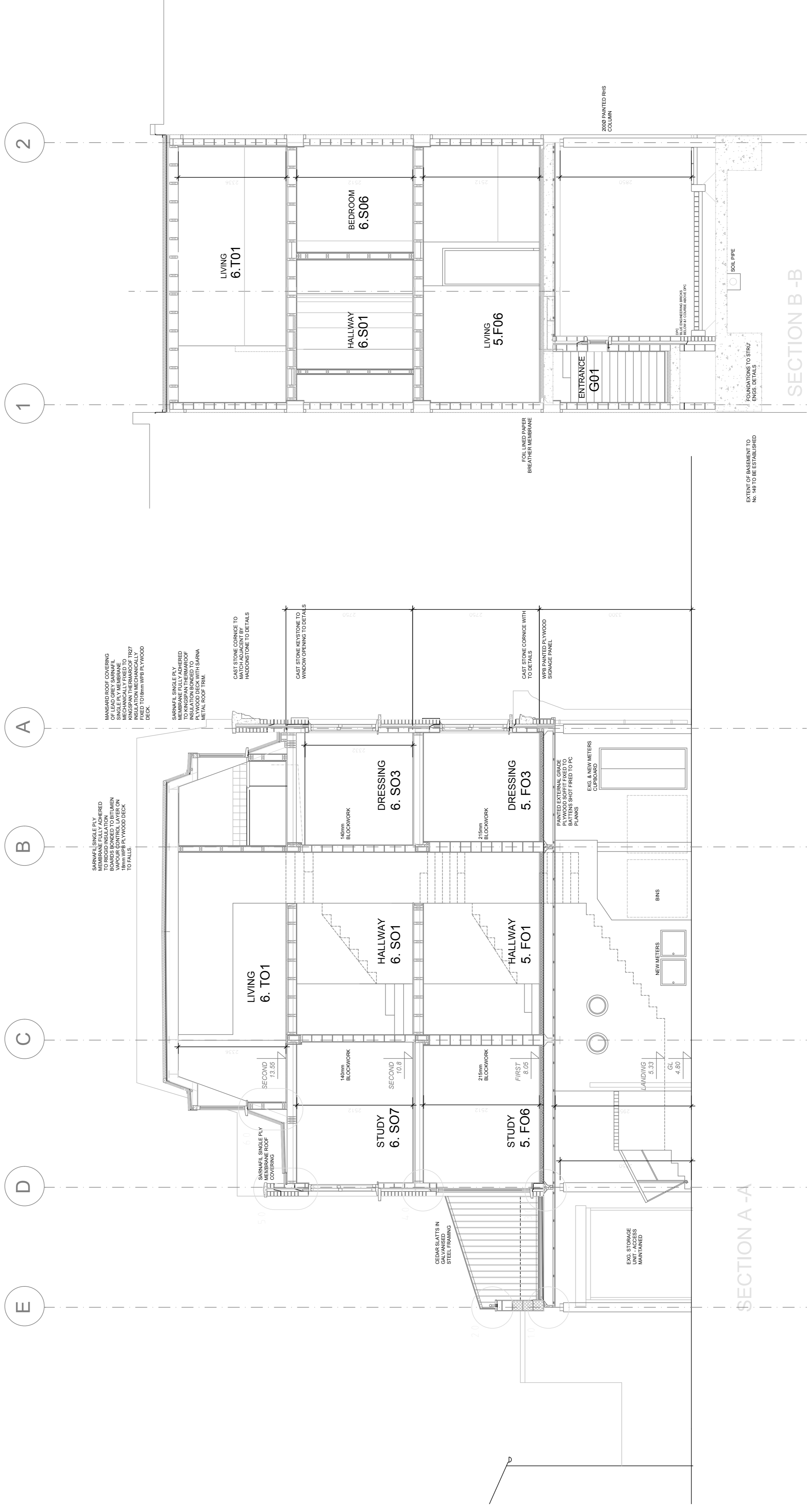
3.0 1:20
Pre-cast hollow core concrete plank floor with 25mm DPC to structural Engls. details. WPB painted plywood soff. fixed to battens shot fire to underside of units. Cavity wall construction with painted sw double Vitrigo floating floor underfloor heating system with 120x120mm 70mm thick panels and 25mm dia. pipes installed above DPC in accordance with manufacturers recommendations.



2.0 1:20
50mm solid oak handrail on galvanised ms framework. 120x25mm oak board at 135mm c/s. bolted to galvanised ms framework.



1.0 1:20
Precast hollow core concrete planks to 50mm solid oak handrail on galvanised ms framework. 120x25mm oak board at 135mm c/s. bolted to galvanised ms framework. WPB painted plywood soff. fixed to battens shot fire to underside of units. 215mm rendered 20mm 2 coat asphalt waterproof membrane to falls with timber deck on treated timber framework.



NO.	REVISIONS	DATE	INITIAL
A.	Cavity increased in ext walls, general revisions	28.12.01	LJP

PROJECT
DAWES ROAD INFILL
SALISBURY MEWS, DAWES ROAD
FULHAM

CLIENT
MILDWISH DEVELOPMENTS
SALISBURY MEWS

DRAWING
SECTIONS
UNITS 5 & 6

SCALE
1:50

DATE
01.12.01

DRAWN
LJP

CHECKED



Andy Strange Associates
Architecture
Master Planning
Conservation

59 Kings Road, Godalming, Surrey, GU7 3EX.
Fax: 01483 427189. Mobile: 07770 421624
e-mail: andystrange@btinternet.com.