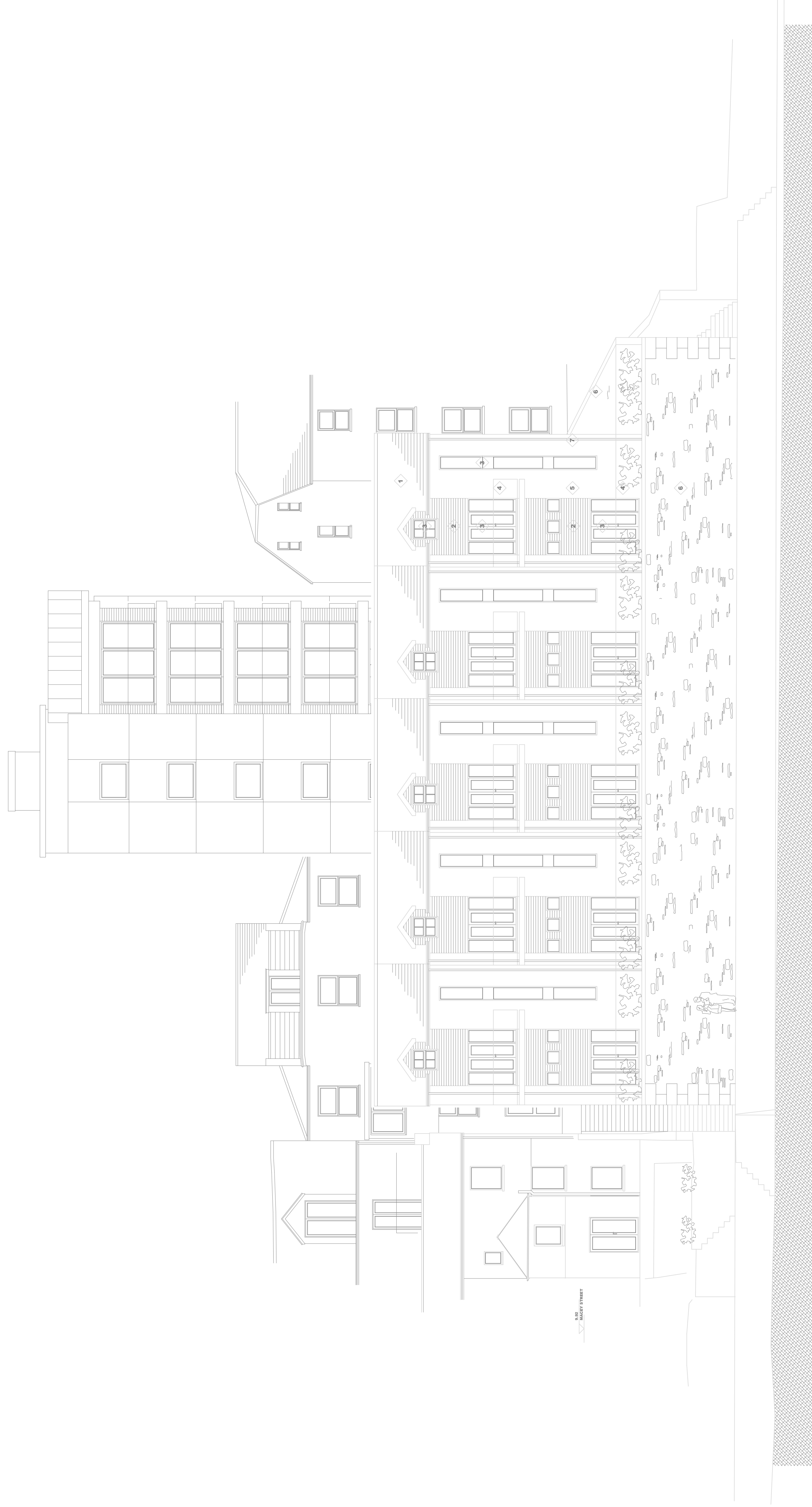


PRELIMINARY PLANNING APPLICATION DRAWINGS
NOT FOR ISSUE

MATERIALS:

1. INTERIOR WALL CLADDING
2. INTERIOR WALL CLADDING
3. SOLID SLAB TRAMING
4. SOLID SLAB TRAMING
5. RECLAIMED SANDSTONE COURSE STONE
6. RECLAIMED SANDSTONE COURSE STONE
7. BLACK COMPACT FRUIT DOOR
8. BLACK COMPACT FRUIT DOOR
9. ALUMINIUM SLIDING GLASS DOOR
10. ALUMINIUM SLIDING GLASS DOOR
11. ALUMINIUM SLIDING GLASS DOOR
12. ALUMINIUM SLIDING GLASS DOOR
13. ALUMINIUM SLIDING GLASS DOOR
14. ALUMINIUM SLIDING GLASS DOOR
15. ALUMINIUM SLIDING GLASS DOOR
16. ALUMINIUM SLIDING GLASS DOOR
17. ALUMINIUM SLIDING GLASS DOOR



NO.	REVISIONS	DATE	INITIAL

PROJECT
**RESIDENTIAL DEVELOPMENT
HARBOUR LIGHTS NIGHTCLUB SITE
FORE STREET, TORPOINT**

DEMOLITION OF NIGHT CLUB,
FIVE WATERSIDE MEWS TOWNHOUSES,
INTEGRAL GARAGING AND SITE PARKING,
BASEMENT SERVICING,
COMMERCIAL PLATE AT GROUND LEVEL,
FIVE LUXURY APARTMENTS,
PUBLIC SPACE PROVISION TO TOWN WITH
TWO NEW ACCESS STAIRS TO WATERSIDE
LINKING WATERSIDE PATH WITH TOWN
CENTRE.

CLIENT
**MIR S HUGGINS
HUGGINS BROS MARINE LTD
CARBIELE WHARF, TORPOINT, PL11 2RE.**

DRAWING
**NORTH ELEVATION.
MEWS HOUSES.**

SCALE	DATE	DRAWN	CHECKED
1:100	3.8.14	AS	-



Island Cottage
Tamar Street, Torpoint, Cornwall, PL11 2AW.
e-mail: andystrange@bhinternet.com
Tel: 01752 814004. 07770 421624
www.andystrangearchitects.com

DRAWING NO.
1430-PL-114

REV
-

CAD NO. C:\DRAWINGS\1430114

CLIENTS ARE ADVISED THAT THIS DRAWING IS A PRELIMINARY PLANNING APPLICATION DRAWING AND IS NOT TO BE USED FOR ANY OTHER PURPOSES. THE CLIENTS ACCEPTS RESPONSIBILITY FOR THE ACCURACY OF THE INFORMATION PROVIDED AND THE CLIENTS ACCEPTS RESPONSIBILITY FOR THE ACCURACY OF THE INFORMATION PROVIDED. THE CLIENTS ACCEPTS RESPONSIBILITY FOR THE ACCURACY OF THE INFORMATION PROVIDED. THE CLIENTS ACCEPTS RESPONSIBILITY FOR THE ACCURACY OF THE INFORMATION PROVIDED.